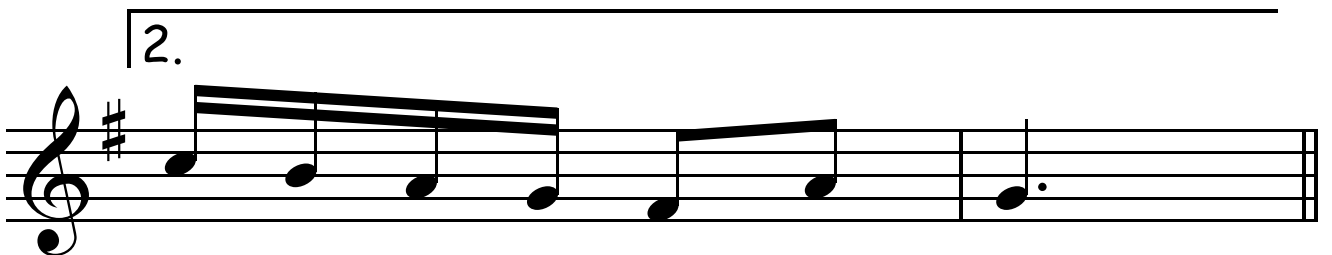
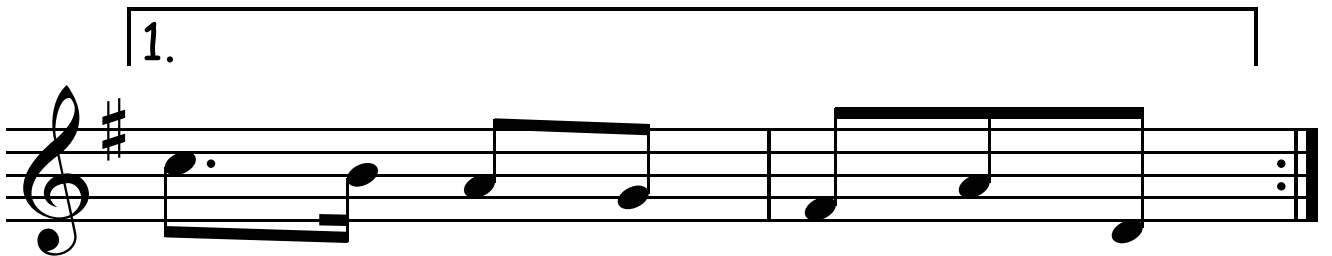
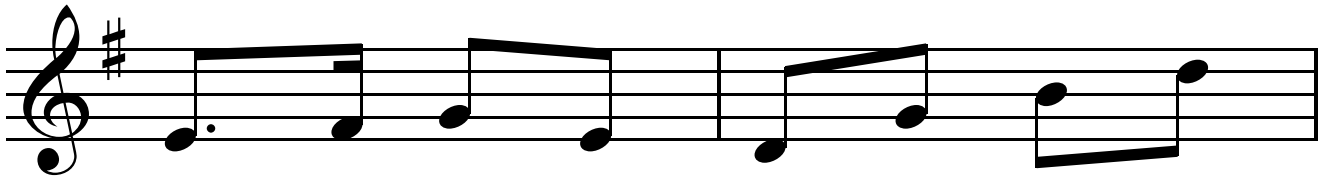
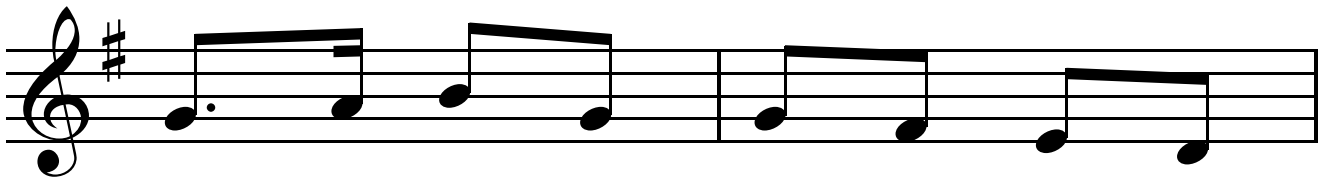
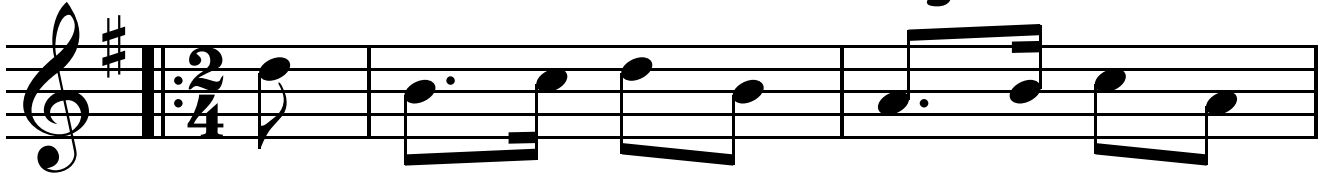


The Whitehaven Volunteer

The musical score for 'The Whitehaven Volunteer' is presented on eight staves. It begins with a treble clef, a key signature of one sharp (F#), and a 2/4 time signature. The first staff includes a repeat sign with first and second endings. The melody consists of eighth and sixteenth notes, with some beamed sixteenth notes. The piece concludes with a final cadence on the eighth staff.

March of St Timothy

Judi Morningstar 1985



March of St Timothy (cont)

The image displays a musical score for the piece 'March of St Timothy (cont)'. The score is written on seven staves, each beginning with a treble clef and a key signature of one sharp (F#). The music is composed of eighth and sixteenth notes, with some measures containing beamed eighth notes. The piece concludes with a double bar line on the final staff.

Venus (Venice?) Polka

The musical score for 'Venus (Venice?) Polka' is written on a single staff in treble clef, key of D major (one sharp), and 2/4 time. The piece begins with a repeat sign and a first ending bracket. The melody consists of a series of eighth and quarter notes, with some beamed eighth notes. The piece concludes with a double bar line and repeat dots.

Venus Polka (cont)

The image displays a musical score for the piece 'Venus Polka (cont)'. It consists of eight staves of music, each beginning with a treble clef and a key signature of two sharps (F# and C#). The first staff includes a repeat sign at the beginning. The notation is primarily composed of eighth and sixteenth notes, with some rests. The piece concludes with a double bar line and repeat dots at the end of the eighth staff.