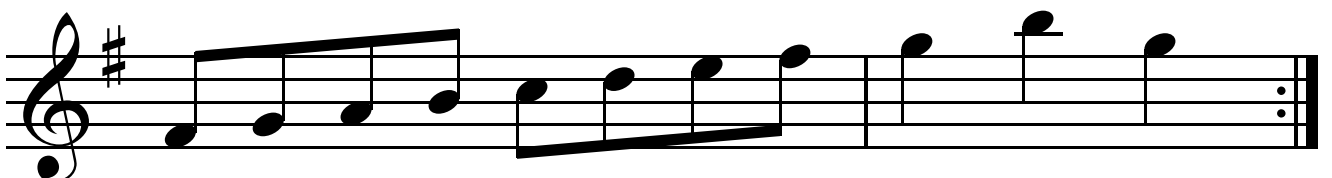
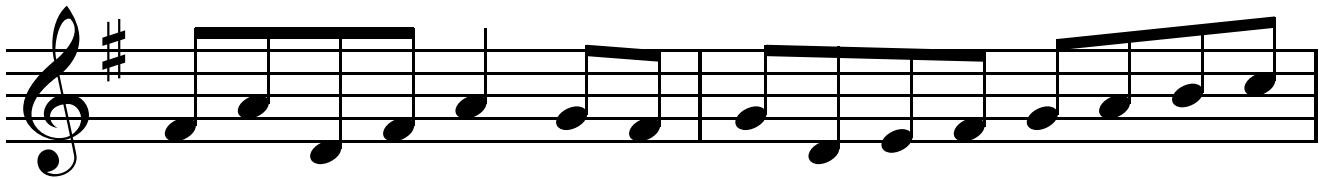
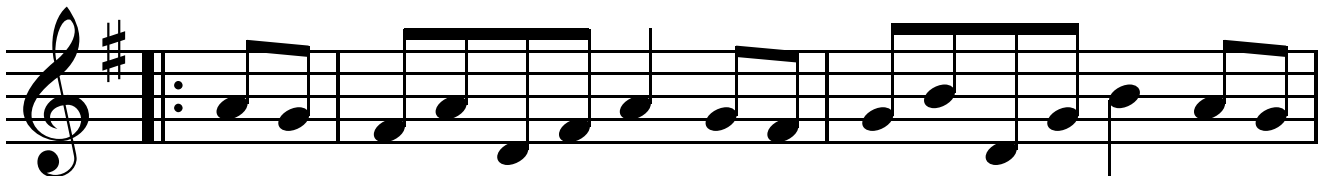
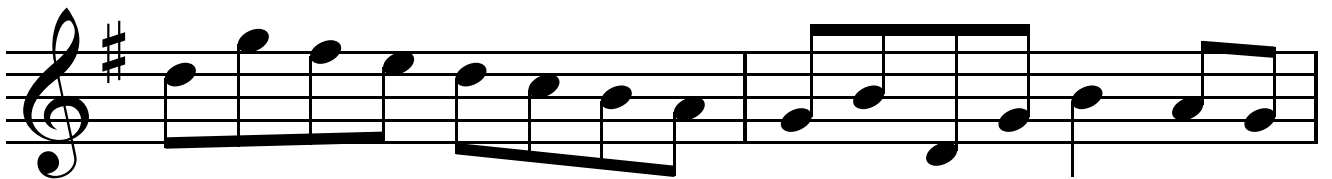
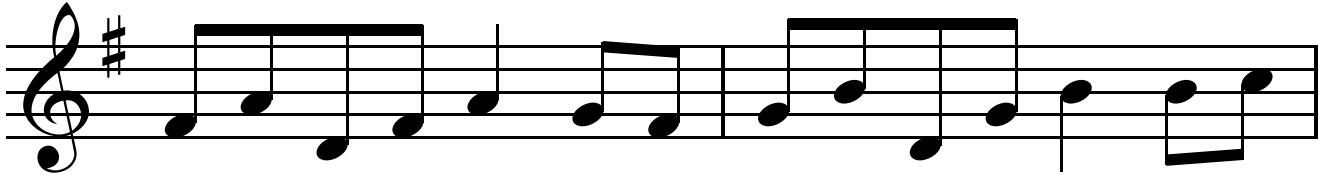
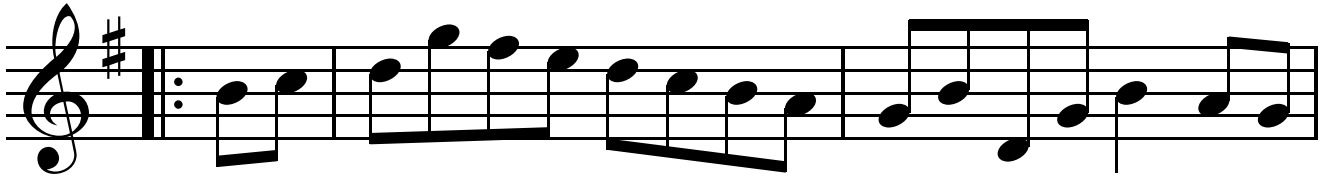


# Manchester Hornpipe

The musical score for Manchester Hornpipe consists of eight staves of music. The key signature is two sharps (F# and C#). The piece begins with a repeat sign. The first staff contains a triplet of eighth notes. The second staff ends with a triplet of eighth notes. The third staff continues the melodic line. The fourth staff concludes with a repeat sign. The fifth staff starts with a repeat sign and contains a triplet of eighth notes. The sixth staff features two triplets of eighth notes. The seventh staff continues the melody. The eighth staff concludes with a repeat sign.

# Navvie on the Line



# The Steamboat

The musical score for 'The Steamboat' is written in G major (one sharp) and 2/4 time. It consists of eight staves of music. The first staff begins with a repeat sign and a triplet of eighth notes. The melody is characterized by eighth and sixteenth notes, with some slurs and ties. The piece concludes with a double bar line and repeat dots.